

Erratum

Erratum to ‘Interaction between cell shape and contraction pattern in the *Physarum plasmodium*’

[Biophys. Chem., 84 (2000) 195–204][☆]

Toshiyuki Nakagaki^{a,*}, Hiroyasu Yamada^{a,b}, Tetsuo Ueda^b

^a*Bio-mimetic Control Research Centre, The Institute of Physical and Chemical Research (RIKEN), Shimoshidami, Moriyama, Nagoya, 463-0003, Japan*

^b*Research Institute for Electronic Science, Hokkaido University, Sapporo 060-0812, Japan*

The publisher regrets that, in the above article, Fig. 8 was printed in duplicate and Fig. 7 was omitted. Please see the correct version of Fig. 7 overleaf.

[☆] PII of original article: S0301-4622(00)00108-3

*Corresponding author. Tel.: +81-52-736-5870; fax: +81-52-736-5871.

E-mail address: nakagaki@bmc.riken.go.jp (T. Nakagaki).

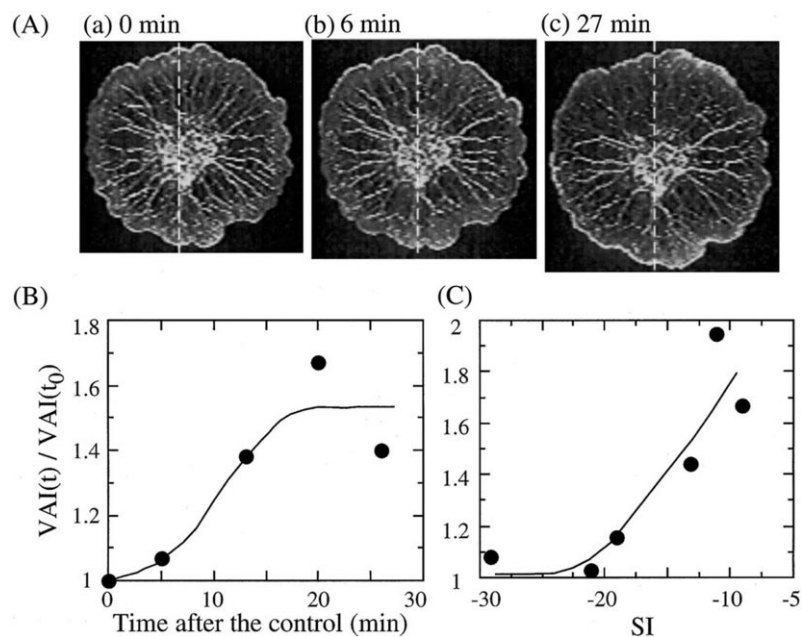


Fig. 7. Modulation of vein arrangement by artificial control of the contraction pattern. (A) Plasmodium at 0 (a), 6 (b) and 27 (c) minutes from the beginning of the oscillatory variations of temperature. Dashed white line indicates the position of the narrow gap between two PDs in Fig. 1. (B) Time course of $VAI(t)$ normalized by that just before the temperature oscillations, $VAI(t_0)$. (C) Relationship of VAI to SI.